



# Erratum to: Instagram photos reveal predictive markers of depression

Andrew G Reece<sup>1\*</sup> and Christopher M Danforth<sup>2,3,4\*</sup>

\*Correspondence:

reece@g.harvard.edu;

chris.danforth@uvm.edu

<sup>1</sup>Department of Psychology,  
Harvard University, 33 Kirkland St,  
Cambridge, MA 02138, USA

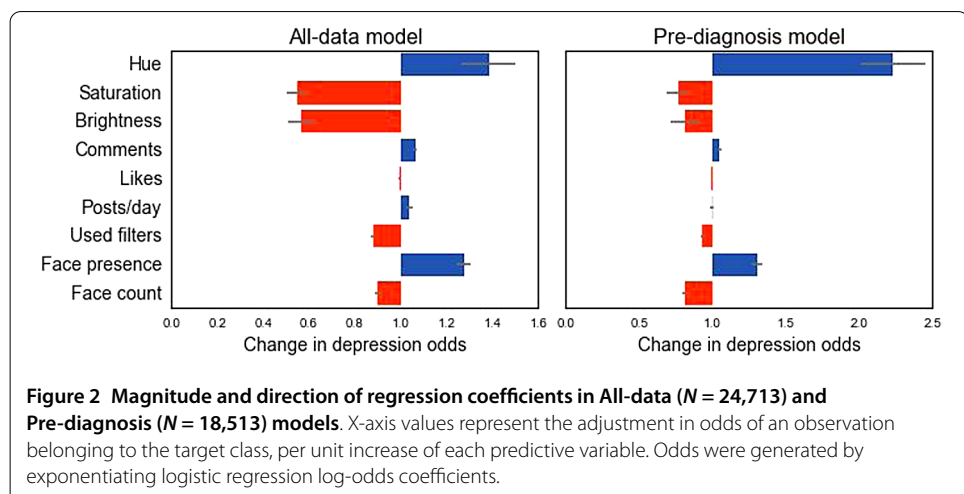
<sup>2</sup>Computational Story Lab, Vermont  
Advanced Computing Core,  
University of Vermont,  
210 Colchester Ave, Burlington, VT  
05405, USA

Full list of author information is  
available at the end of the article

## 1 Erratum

Upon publication of the original article [1], it was noticed that Figure 2 contained an error. The horizontal bars for the 'likes' row were incorrectly shown as blue. The horizontal bars for the 'likes' row should be orange. This has now been acknowledged and corrected in this erratum. The correct Figure 2 is shown below.

In the section Method, subsection Improving data quality, the sentence 'We also excluded participants with CES-D scores of 22 or higher' should read as 'We also excluded participants with CES-D scores of 21 or lower'. This has now been acknowledged and corrected in this erratum.



#### **Author details**

<sup>1</sup>Department of Psychology, Harvard University, 33 Kirkland St, Cambridge, MA 02138, USA. <sup>2</sup>Computational Story Lab, Vermont Advanced Computing Core, University of Vermont, 210 Colchester Ave, Burlington, VT 05405, USA.

<sup>3</sup>Department of Mathematics and Statistics, University of Vermont, 210 Colchester Ave, Burlington, VT 05405, USA.

<sup>4</sup>Vermont Complex Systems Center, University of Vermont, 210 Colchester Ave, Burlington, VT 05405, USA.

#### **Publisher's Note**

Springer Nature remains neutral with regard to jurisdictional claims in published maps and institutional affiliations.

Received: 24 August 2017 Accepted: 24 August 2017 Published online: 05 September 2017

#### **References**

1. Reece AG, Danforth CM (2017) Instagram photos reveal predictive markers of depression. *EPJ Data Sci* 6(1):15. doi:10.1140/epjds/s13688-017-0110-z